



# NKIAMRE Polyclonal Antibody

<b>Catalog No</b>	YP-Ab-16755
<b>Isotype</b>	IgG
<b>Reactivity</b>	Human;Rat;Mouse;
<b>Applications</b>	IHC;IF;WB;ELISA
<b>Gene Name</b>	CDKL3
<b>Protein Name</b>	Cyclin-dependent kinase-like 3
<b>Immunogen</b>	The antiserum was produced against synthesized peptide derived from human CDKL3. AA range:291-340
<b>Specificity</b>	NKIAMRE Polyclonal Antibody detects endogenous levels of NKIAMRE protein.
<b>Formulation</b>	Liquid in PBS containing 50% glycerol, 0.5% BSA and 0.02% sodium azide.
<b>Source</b>	Polyclonal, Rabbit,IgG
<b>Purification</b>	The antibody was affinity-purified from rabbit antiserum by affinity-chromatography using epitope-specific immunogen.
<b>Dilution</b>	WB 1:500-2000 IHC: 1/100 - 1/300. ELISA: 1/5000.. IF 1:50-200
<b>Concentration</b>	1 mg/ml
<b>Purity</b>	≥90%
<b>Storage Stability</b>	-20°C/1 year
<b>Synonyms</b>	CDKL3; NKIAMRE; Cyclin-dependent kinase-like 3; Serine/threonine-protein kinase NKIAMRE
<b>Observed Band</b>	67kD
<b>Cell Pathway</b>	Cytoplasm .
<b>Tissue Specificity</b>	Fetal heart,Testis,
<b>Function</b>	catalytic activity:ATP + a protein = ADP + a phosphoprotein..domain:The [NKR]KIAxRE motif seems to be a cyclin-binding region..similarity:Belongs to the protein kinase superfamily. CMGC Ser/Thr protein kinase family. CDC2/CDKX subfamily..similarity:Contains 1 protein kinase domain.,
<b>Background</b>	The protein encoded by this gene is a member of cyclin-dependent protein kinase (CDK) family. CDK family members are highly similar to the gene products of Saccharomyces cerevisiae cdc28, and Schizosaccharomyces pombe cdc2, and are known to be important regulators of cell cycle progression. This gene was identified as a gene absent in leukemic patients with chromosome 5q deletion. This loss may be an important determinant of dysmyelopoiesis. Alternative splicing results in multiple transcript variants encoding different isoforms. [provided by RefSeq, Jul 2008],

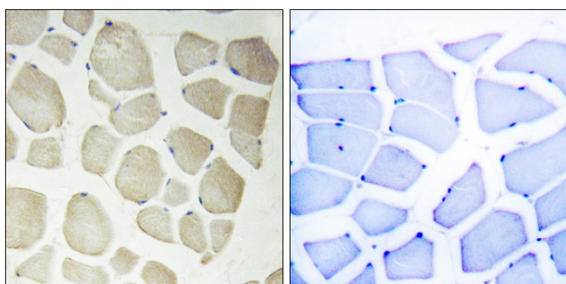
**matters needing attention**

Avoid repeated freezing and thawing!

**Usage suggestions**

This product can be used in immunological reaction related experiments. For more information, please consult technical personnel.

## Products Images



Immunohistochemistry analysis of paraffin-embedded human skeletal muscle, using CDKL3 Antibody. The picture on the right is blocked with the synthesized peptide.